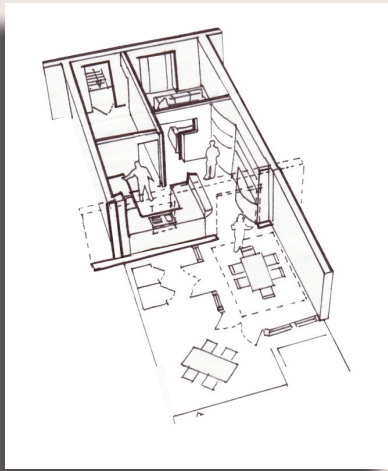


Food for thought this winter...



Add Value To Your Home

Amtico magazine asked visitors to this year's Grand Designs show what they most loved about their home. Answers focused upon spatial elements, and the proportions of space: *'Our bathroom which we redesigned last year to make much larger, so it's great!'*, *'Space, we have an open planned living-dining room together'*, *'I like the hallway. It's very wide and spacious and it makes you think the rest of the house is as big - and it isn't!'*

This October's IDFX magazine discusses converting basements; *'If a basement space brings to mind a dark and damp troglodyte cave, think again. Advances in engineering, modern waterproofing techniques and imaginative design of light wells have brought us a new generation of those living comfortably down under'*. Not only will such a conversion add a new useable room, but also create more space throughout the home. For example putting your utility room into a basement will give you more room on the ground floor. A new layout is a great way to reinvent your space and can add value through maximising unused space.

Government Regulations

This month sees the revision of planning regulations. Under the reforms the majority of homeowners will no longer need to obtain planning permission when extending their properties. This should mean 80,000 fewer planning applications annually; now allowing both loft conversions and rear extensions. For further details view:

<http://www.planningportal.gov.uk/england/professionals/1115316475368.html>



Warm winter nights ahead!

On trend this season is using fabrics as decorative pieces. Through using various textures and textiles on cushions, lamp shades, headboards, bedding and screens, you can invent a warming, tactile space. Using silks, velvets, cashmeres and soft cottons will create a sumptuous space to enjoy over the winter months! Visit these suppliers for ideas on the layering of fabrics and furnishings;

www.nicolefarhi.com

www.thewhitecompany.com

www.toast.co.uk

www.lombok.co.uk

Ochre Showroom

It was a pleasure to visit the Ochre showroom in Clerkenwell this month. Their collection of furniture, lighting and accessories are striking and have an understated elegance. Their emphasis on very high quality materials and flawless British craftsmanship shines through.

To view their bespoke range visit www.ochre.net

